

STATE OF ARKANSAS
STATE HIGHWAY DEPARTMENT

PLAN OF PROPOSED BRIDGES
ON
BENTON-MALVERN ROAD
SALINE COUNTY

FISCAL YEAR	JOB NO.	SHEET No.	TOTAL SHEETS
1928	666	1	21

Prop. Brs. Bent. Malvern Rd. Sal. Co. Dr. 922

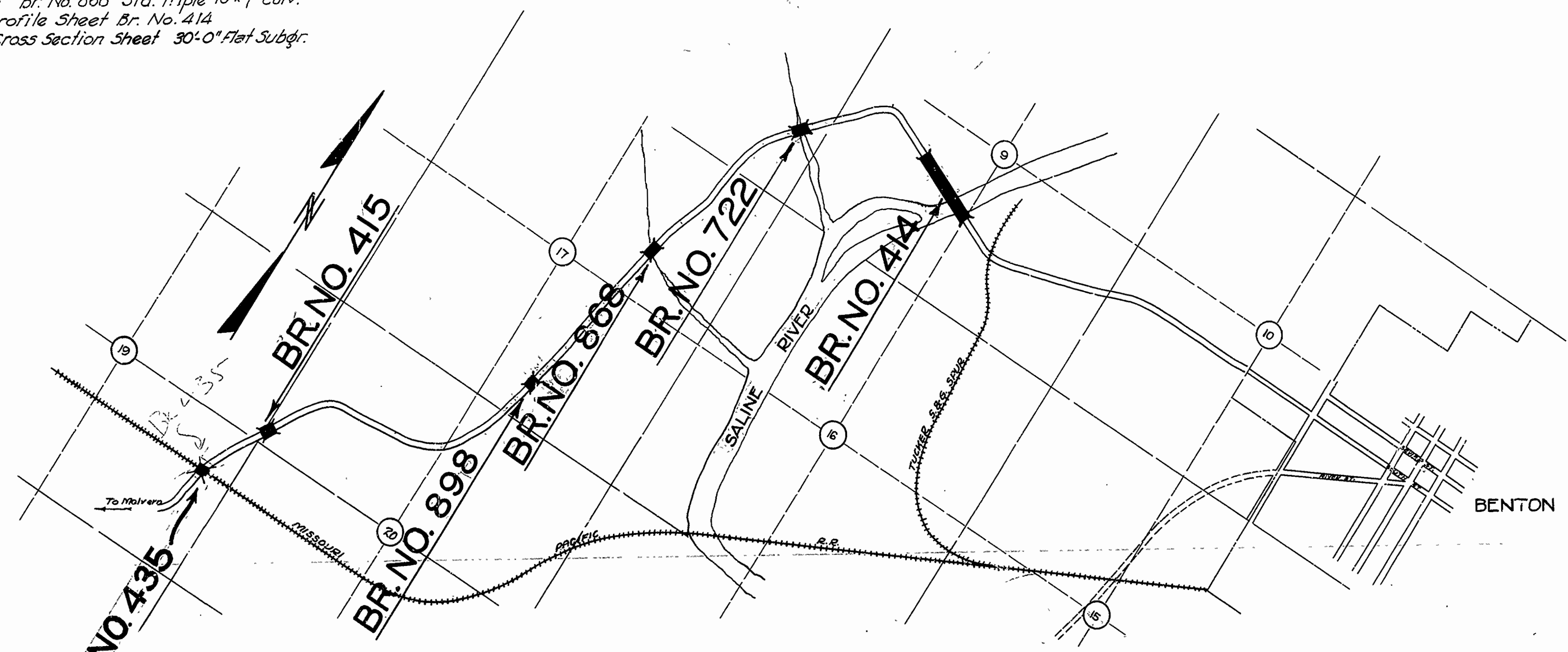
INDEX OF SHEETS

Sheet No. 1	Drwg. No. 922	Title Sheet
" " 2	" " 923	Layout Br. No. 414
" " 3	" " 924	" East Approach & Arch Spans Br. No. 414
" " 4	" " 925	" Part of West Approach Br. No. 414
" " 5	" " 926	" " " " " " 414
" " 6	" " 927	Details of Arch Spans Br. No. 414
" " 7	" " 928	" " Abuts. and Piers Br. No. 414
" " 8	" " 929	" " Substr. East Appr. Br. No. 414
" " 9	" " 1001	" " Superstr. " " " 414 Std. 25' R.C.D. Gir.
" " 10	" " 1019	" " West Appr. Std. 35' R.C.D. Gir. & Conc. Pile Bents.
" " 11	" " 930	Layouts " Brs. No. 415 & 898
" " 12	" " 931	Details " Substr. Br. No. 415
" " 13	" " 154	" " Br. No. 898 Std. Double 10'x6' Culv.
" " 14	" " 932	Layout " Br. No. 436
" " 15	" " 933	Details " Substr. Br. No. 435
" " 16	" " 185	" " Superstr. " " 435 Std. 45' R.C.D. Gir.
" " 17	" " 934	Layout " Brs. No. 722 & 868
" " 18	" " 935	Details " Substr. Br. No. 722
" " 19	" " 158	" " Br. No. 868 Std. Triple 10'x7' Culv.
" " 20	" "	Plan & Profile Sheet Br. No. 414
" " 21	" "	Typical Cross Section Sheet 30'-0" Flat Subgr.

ROUTE 67 SEC. 9
JOB No 666
FEDERAL AID PROJECT No.

QUANTITIES

Item No. 12	Roadway Excavation (Earth)	486 Cu.Yds.
" " 13	Dry Excavation for Strs.	1157 Cu.Yds.
" " 13	Wet " " "	332 Cu.Yds.
" " 13	S.R. " " "	120 Cu.Yds.
" " 17	Roadway Borrow	5199 Cu.Yds.
" " 54	Concrete Class "A"	845.19 Cu.Yds.
" " 54	" " "B"	248.84 Cu.Yds.
" " 54	" " "S"	1537.95 Cu.Yds.
" " 55	Reinforcing Steel	460,444 Lbs.
" " 68	Precast Concrete Piling	3580 Lin.Ft.
" " 69	Rip Rap 10" thick	328 Sp.Yds.
" " 74	Concrete Railing for Structures	3014 Lin.Ft.



LAYOUT
Scale: 1"=1200'

GROSS LENGTH OF PROJECT = 2410'-10 1/2" = 0.456 MI.
NET LENGTH OF PROJECT = 2410'-10 1/2" = 0.456 MI.

APPROVED _____
COMMISSIONER - STATE LANDS, HIGHWAYS AND IMPROVEMENTS

APPROVED _____
STATE HIGHWAY ENGINEER

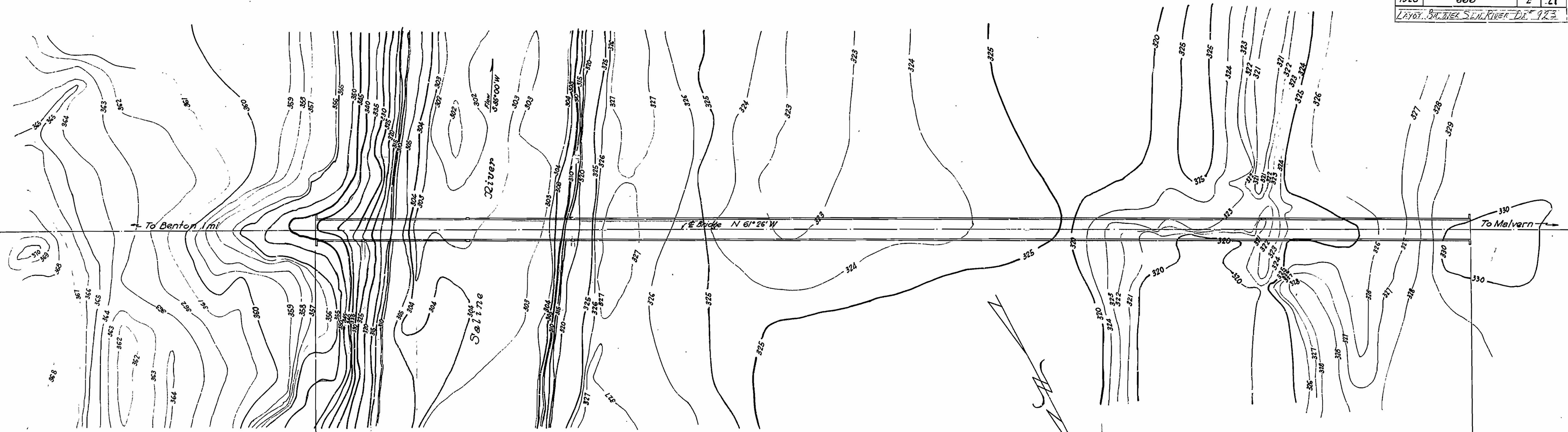
RECOMMENDED FOR APPROVAL _____
DISTRICT ENGINEER - U. S. BUREAU OF PUBLIC ROADS

RECOMMENDED FOR APPROVAL _____
CHIEF ENGINEER - U. S. BUREAU OF PUBLIC ROADS

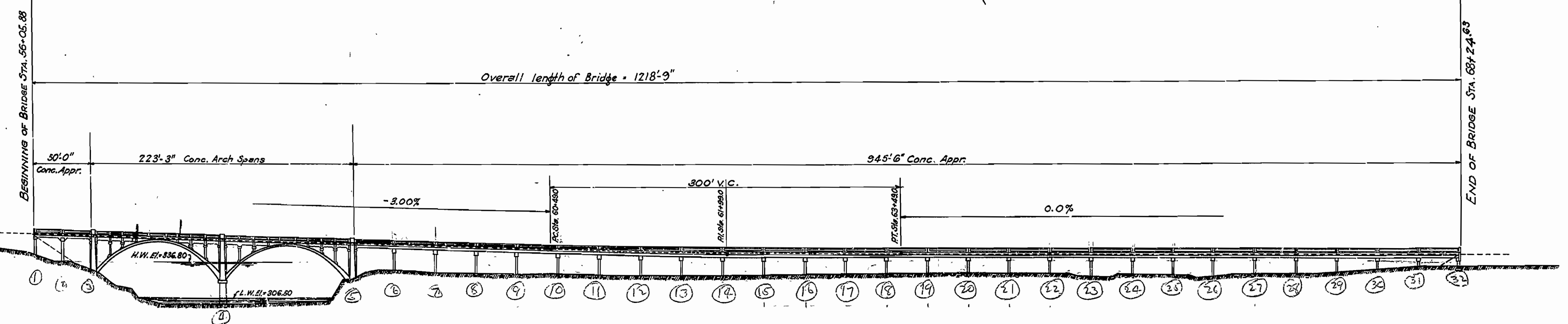
APPROVED _____
DIRECTOR - U. S. BUREAU OF PUBLIC ROADS

M.B. Jacobs
BRIDGE ENGINEER

FISCAL YEAR	JOB NO.	SHEET NO.	TOTAL SHEETS
1928	666	2	21
LAYOUT BRIDGE OVER SALINE RIVER DIST. 923			



PLAN



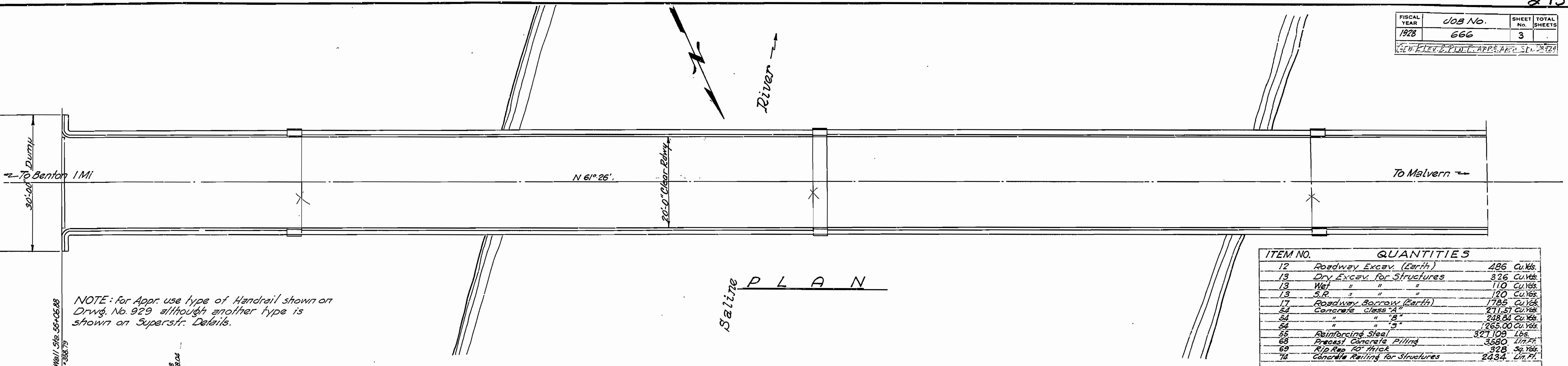
ELEVATION

FOR DETAILS SEE DRWGS. NO. 924-925-926
927-928-929-1001 and 1019.

LAYOUT OF
 BRIDGE OVER SALINE RIVER
 SALINE COUNTY
 ROUTE 67 SEC. 6
 ARKANSAS STATE HIGHWAY DEPARTMENT
 LITTLE ROCK, ARK.
 Drawn By: *E.A.W.* Date: 7-5-28
 Traced By: *E.A.W.* Date: 7-5-28
 Checked By: _____ Date: _____
 Scale: 1 in. = 50 ft.
 BRIDGE No. 414 DRAWING No. 923

M.B. Givens
BRIDGE ENGINEER

FISCAL YEAR	JOB No.	SHEET No.	TOTAL SHEETS
1928	666	3	

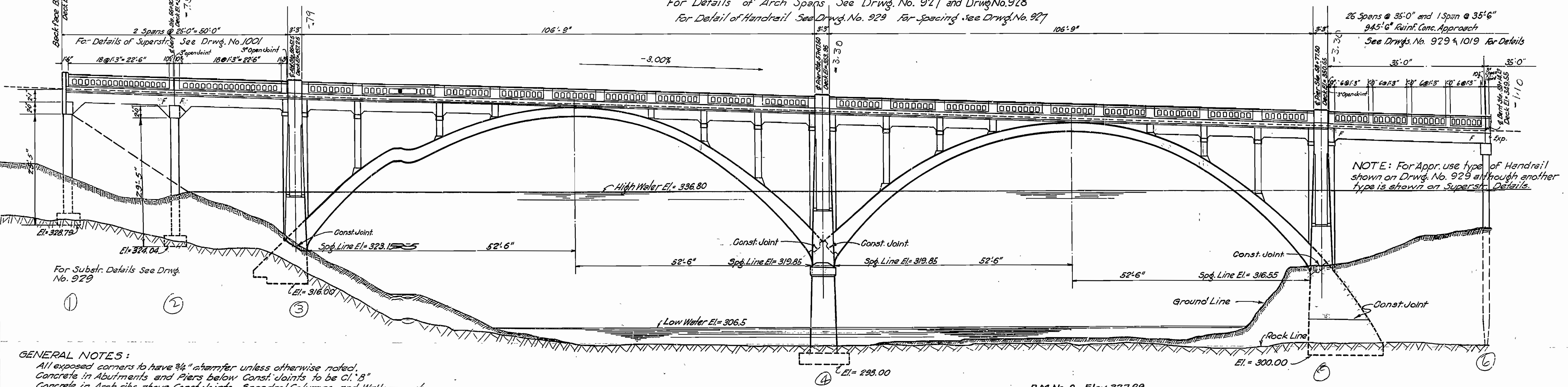


ITEM NO.	QUANTITIES	
12	Roadway Excav. (Earth)	486 Cu.Yds.
13	Dry Excav. for Structures	326 Cu.Yds.
13	Wet " " "	110 Cu.Yds.
13	S.R. " " "	190 Cu.Yds.
17	Roadway Borrow (Earth)	1785 Cu.Yds.
52	Concrete class "A"	271.57 Cu.Yds.
54	" " "B"	248.84 Cu.Yds.
54	" " "C"	1265.00 Cu.Yds.
55	Reinforcing Steel	327,109 Lbs.
68	Precast Concrete Piling	3580 Lin.Ft.
69	Rip Rap 10" Thick	328 Sq.Yds.
72	Concrete Railing for Structures	2434 Lin.Ft.

SALINE PLAN

NOTE: For Appr. use type of Handrail shown on Drwg. No. 929 although another type is shown on Superstr. Details.

For Details of Arch Spans See Drwg. No. 927 and Drwg. No. 928
 For Detail of Handrail See Drwg. No. 929 For Spacing See Drwg. No. 927



NOTE: For Appr. use type of Handrail shown on Drwg. No. 929 although another type is shown on Superstr. Details.

GENERAL NOTES:
 All exposed corners to have 3/4" chamfer unless otherwise noted.
 Concrete in Abutments and Piers below Const. Joints to be Cl. "B"
 Concrete in Arch ribs above Const. Joints, Spandrel Columns and Walls
 Abts. and Pier below Elev. of top of Copings to be Cl. "A"
 Concrete in Arch Deck above Elev. of top of Spandrel Column Copings to be Cl. "S"
 All concrete above top of Curb to be classified as handrail; & to be 1:3 mix, maximum aggregate 1/4 except to be deposited in the dry.
 Reinforcing Steel to be deformed bar: of Structural or Intermediate grade. Shop List and Banding Diagrams must be submitted by Contractor before fabrication is begun.
 Roadway Drains and Expansion Devices to be paid for at unit price bid for Reinf. Steel.
 Specifications: Arkansas Standard Road and Bridge Specifications adopted May 30th, 1925, Revised Jan. 1st, 1928.

ELEVATION

B.M. No. 8 Elev. 327.89
 Nail in 10" Hickory 60' Rt. Sta. 59+42

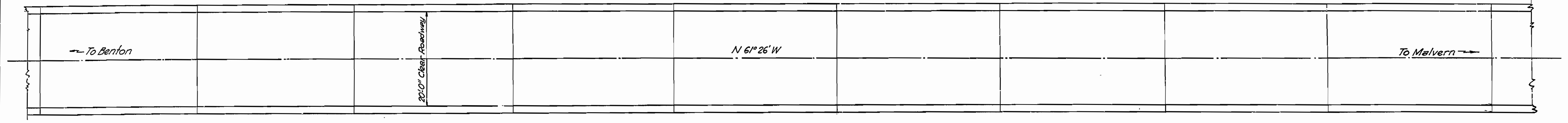
17.79 Total

**GENERAL ELEVATION & PLAN
 EAST APPROACH & ARCH SPANS
 BRIDGE OVER SALINE RIVER**
 SALINE COUNTY
 ROUTE 67 SEC. 9
ARKANSAS STATE HIGHWAY DEPARTMENT
 LITTLE ROCK, ARK.

M.B. Gann
 BRIDGE ENGINEER

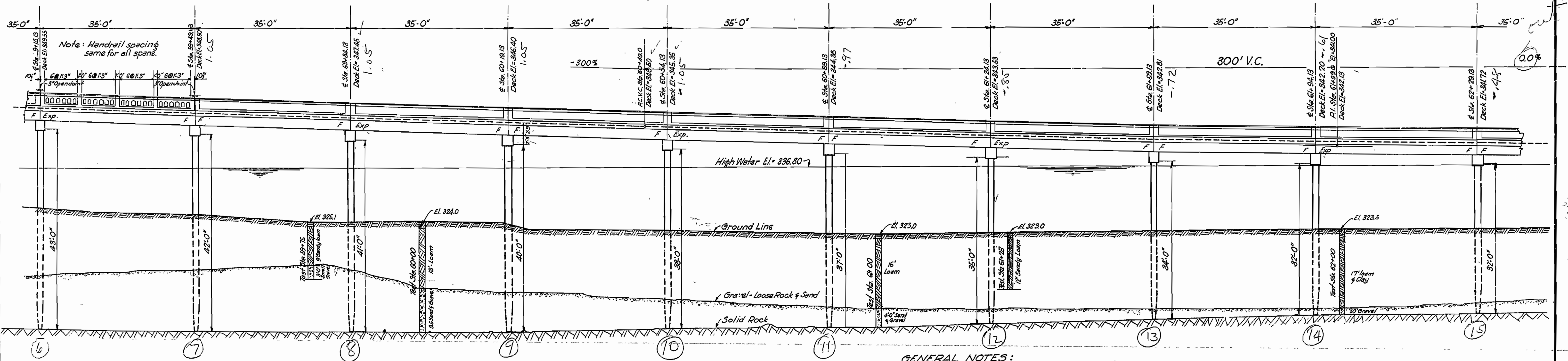
Drawn By: [Signature] Date: 4-26-28
 Traced By: [Signature] Date: 4-27-28
 Checked By: [Signature] Date: [Blank]
 BRIDGE NO. 414 DRAWING NO. 924
 Scale: 1 in. = 10 ft.

FISCAL YEAR	JOB NO.	SHEET NO.	TOTAL SHEETS
1928	666	4	21
PART OF WEST APP. TO ARCH BRIDGE OVER SALINE R. DRAWING NO. 925			



PLAN

26 Spans @ 35'-0" and 1 Span @ 35'-6" = 945'-6" R. C. D. Girder Approach.
 For Girder Details See Drwg. No. 1019 For Handrail Details See Drwg. No. 929
 NOTE: Type of Handrail shown on Drwg. No. 929 is to be used although another type is shown on Girder Detail.

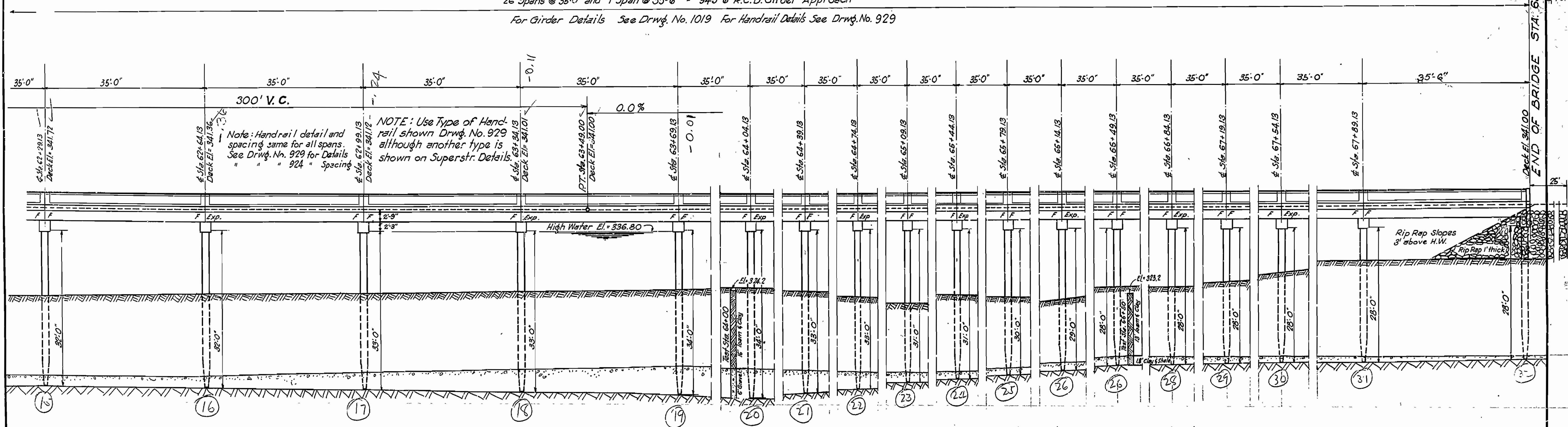
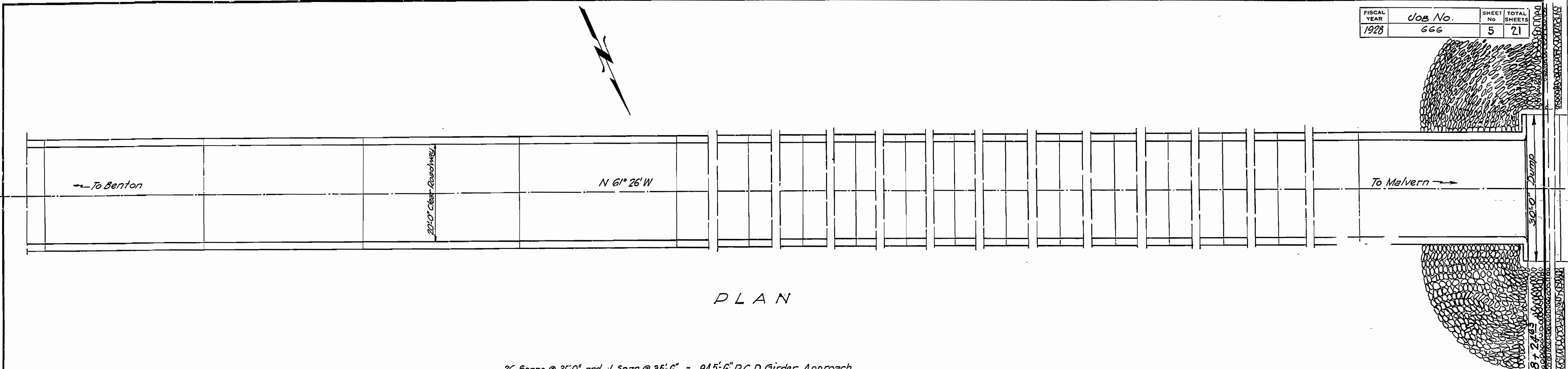


GENERAL NOTES:
 Pile lengths shown are for Estimating Purposes only.
 Actual Lengths to be determined in the field.
 See General Notes on Drwg. No. 924

ELEVATION

LAYOUT OF
 PART OF WEST APPROACH
 TO ARCH BRIDGE OVER SALINE R.
 SALINE COUNTY
 ROUTE 67 SEC. 9
 ARKANSAS STATE HIGHWAY DEPARTMENT
 LITTLE ROCK, ARK.
 Drawn By: *Law* Date: 6-21-28
 Traced By: *E.L.W.* Date: 6-28-28
 Checked By: _____ Date: _____
 Scale: 1 in. = 10 ft.
 BRIDGE No. 414 DRAWING No. 925

M.B. Garris
 BRIDGE ENGINEER



General Notes: Pile Lengths shown are for Estimating Purposes only. Actual lengths are to be determined in the field. See General Notes on Drwg. No. 924.

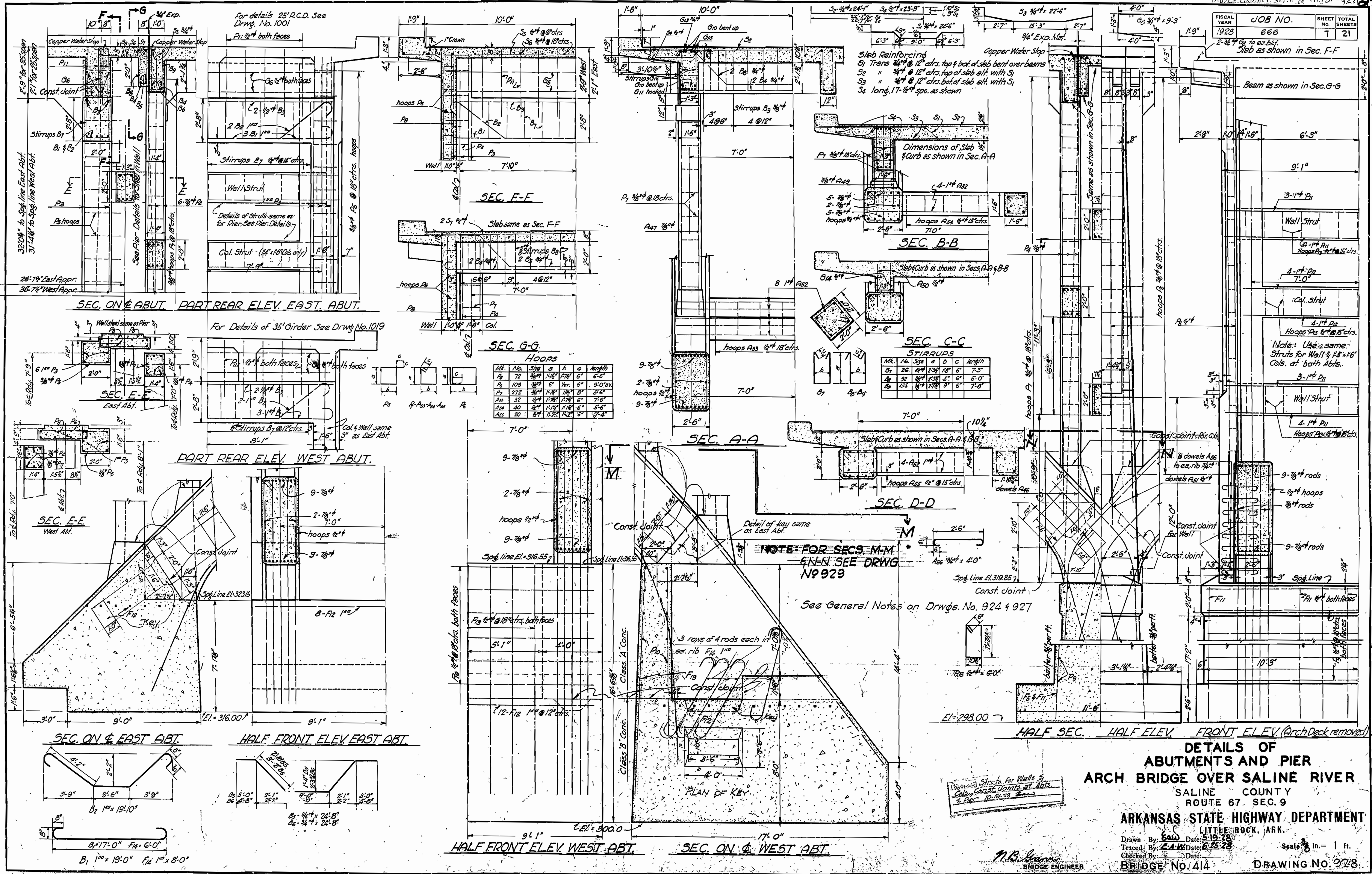
LAYOUT OF
PART OF WEST APPROACH
TO ARCH BRIDGE OVER SALINE R.
SALINE COUNTY
ROUTE 67 SEC. 9
ARKANSAS STATE HIGHWAY DEPARTMENT
LITTLE ROCK, ARK.

Drawn By: *[Signature]* Date: 1-2-28
Traced By: E.A.W. Date: 7-2-28
Checked By: _____ Date: _____

Scale: 1 in. = 10 ft.

BRIDGE No. 414 DRAWING No. 926

M.B. Gann
BRIDGE ENGINEER



DETAILS OF ABUTMENTS AND PIER ARCH BRIDGE OVER SALINE RIVER
 SALINE COUNTY
 ROUTE 67 SEC. 9
ARKANSAS STATE HIGHWAY DEPARTMENT
 LITTLE ROCK, ARK.

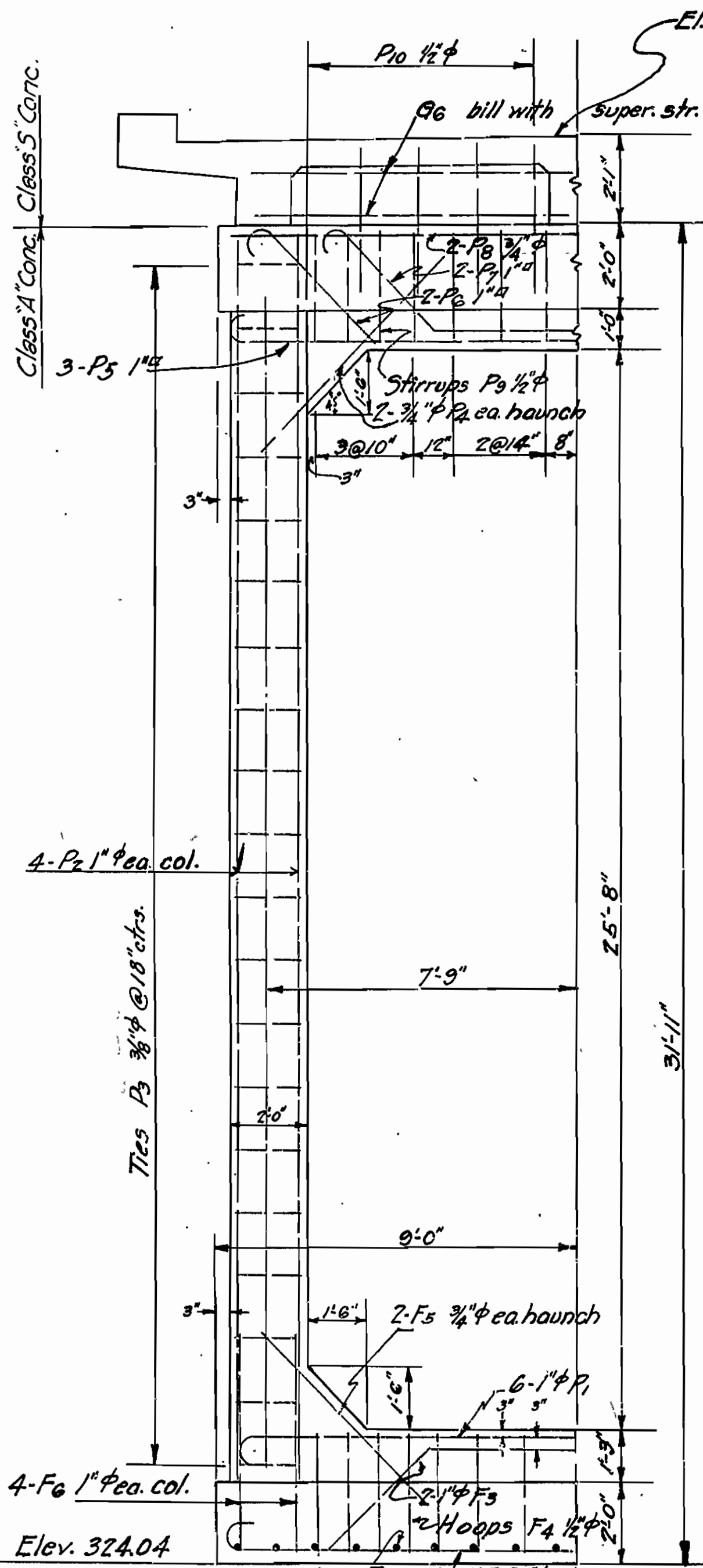
Drawn By: *EAW* Date: 5-19-28
 Traced By: *EAW* Date: 6-25-28
 Checked By: _____ Date: _____

Scale: 3/8" = 1 ft.
 BRIDGE No. 414 DRAWING NO. 928

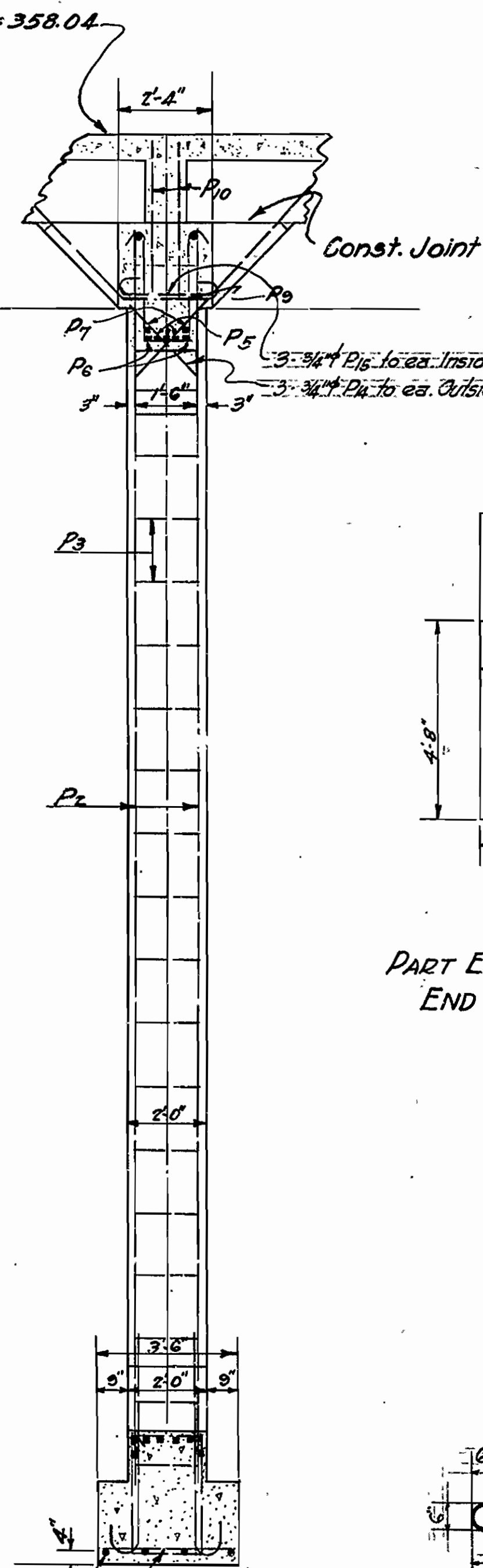
M.B. Seaman
 BRIDGE ENGINEER

FISCAL YEAR	JOB NO.	SHEET NO.	TOTAL SHEETS
1928	666	8	21
E.A.P. SUBS. L.R. & H.W. R. DES. 5-2-28 929			

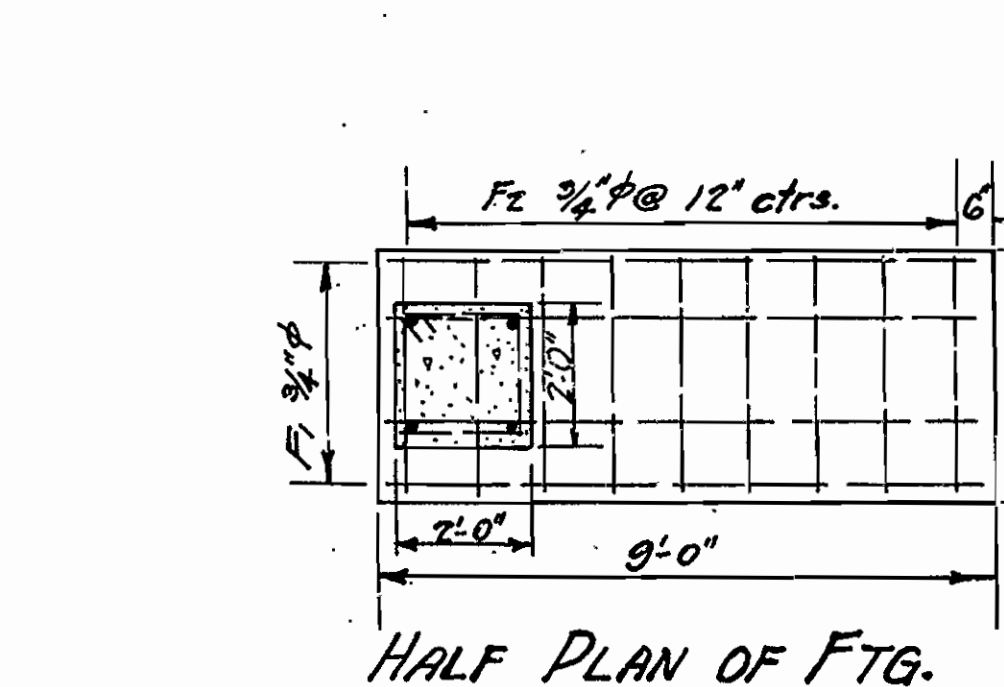
Class 'A' Conc. Class 'S' Conc.



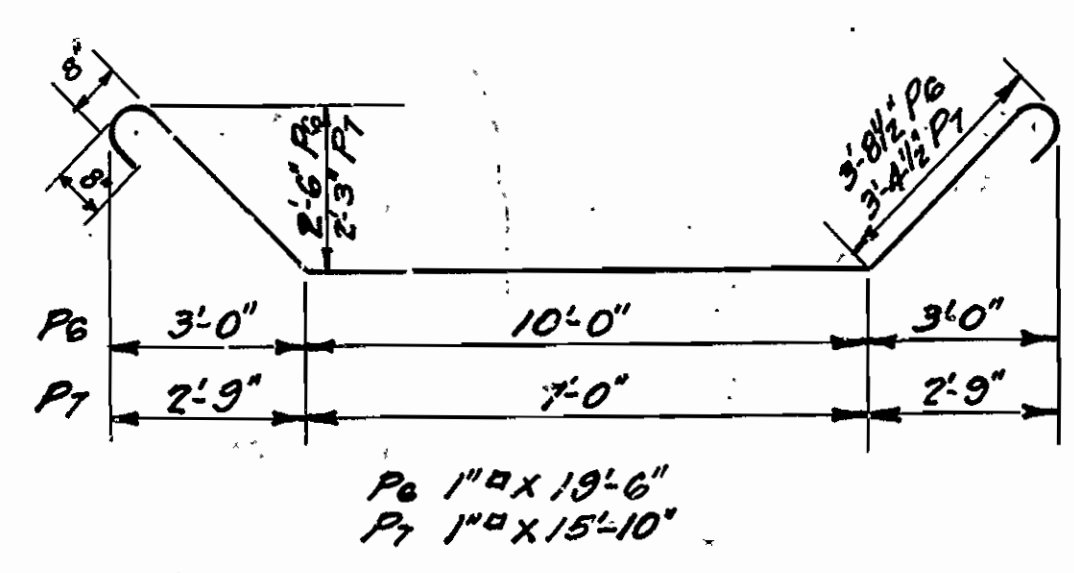
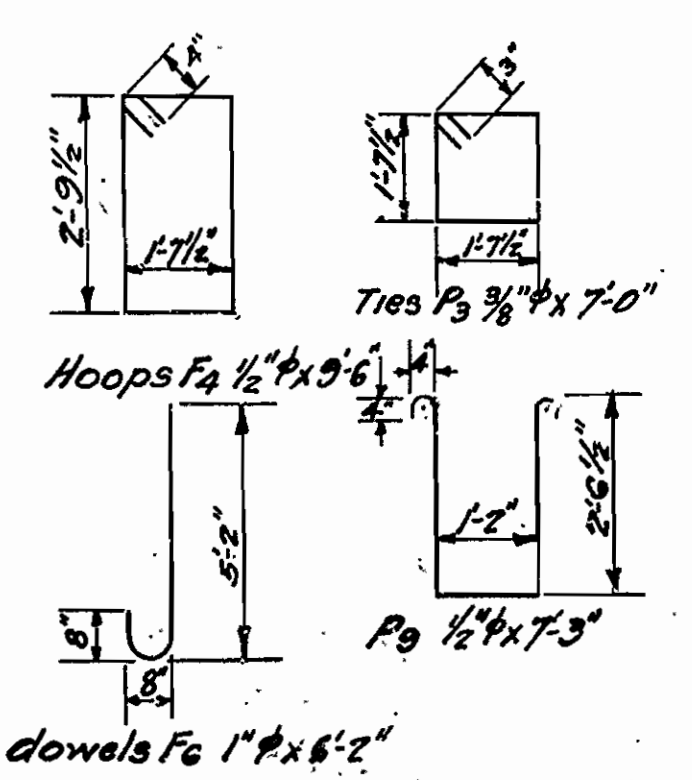
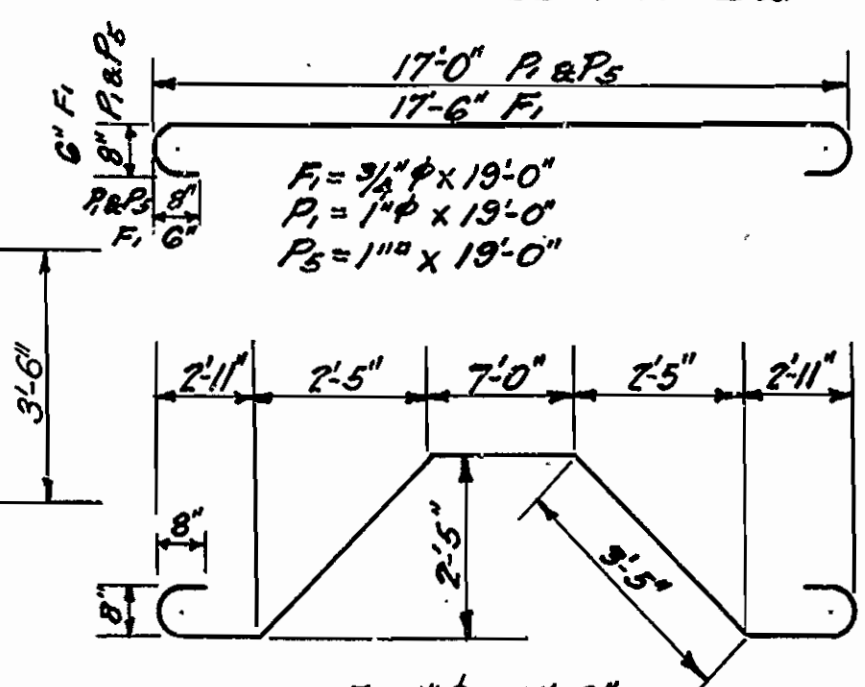
HALF ELEV. INT. BENT



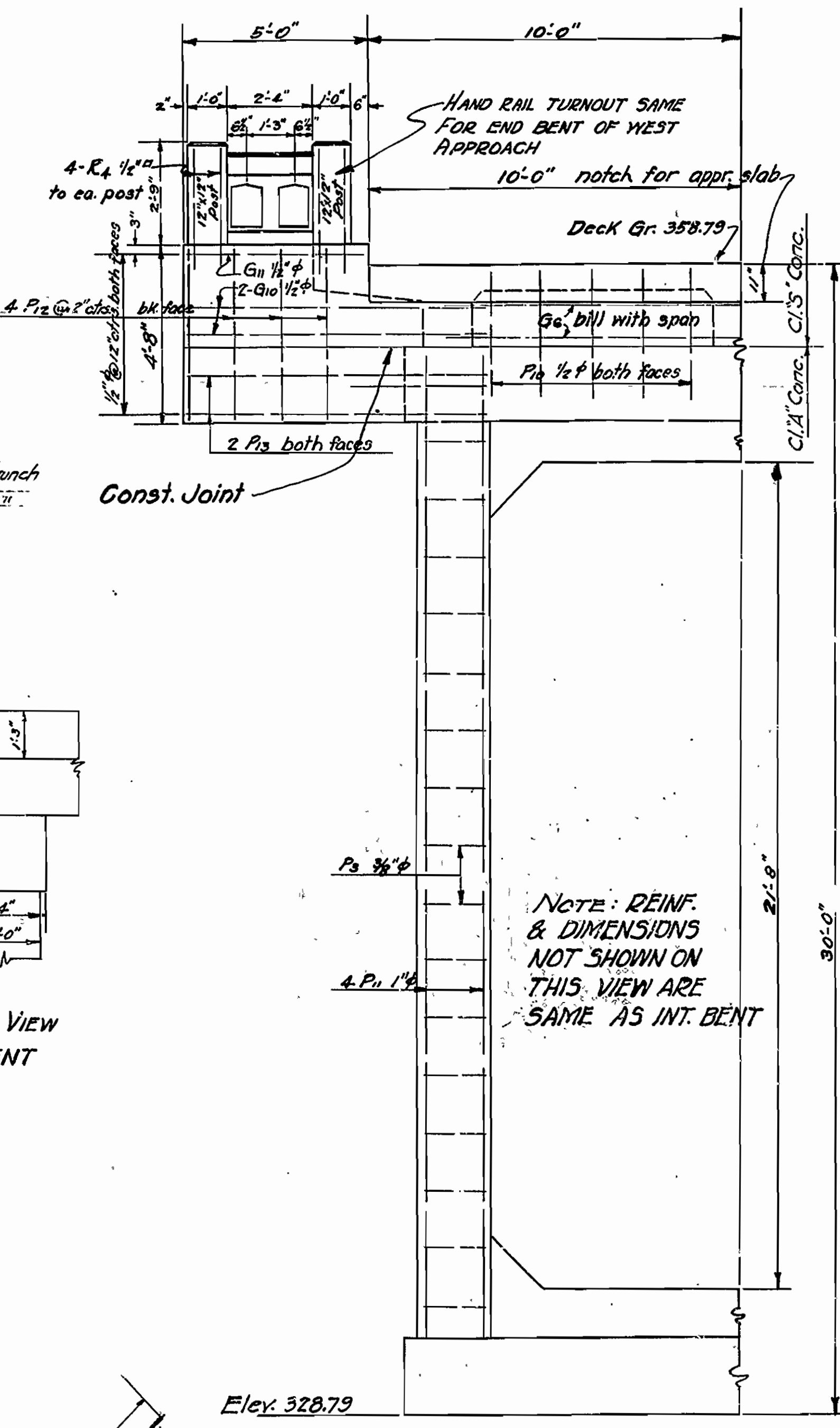
HALF SEC. INT. BENT



HALF PLAN OF FTG.

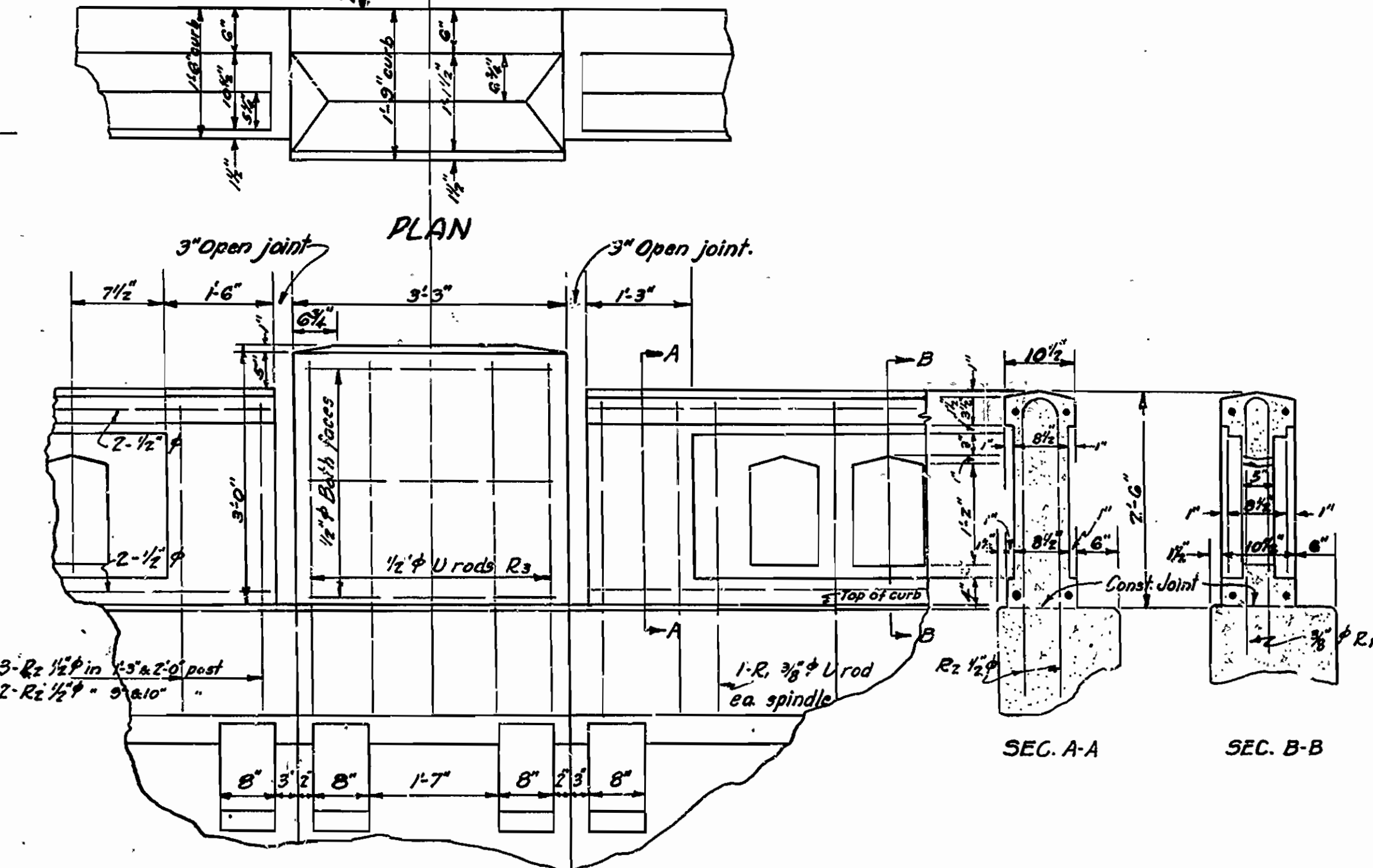


HALF REAR ELEV. END BENT



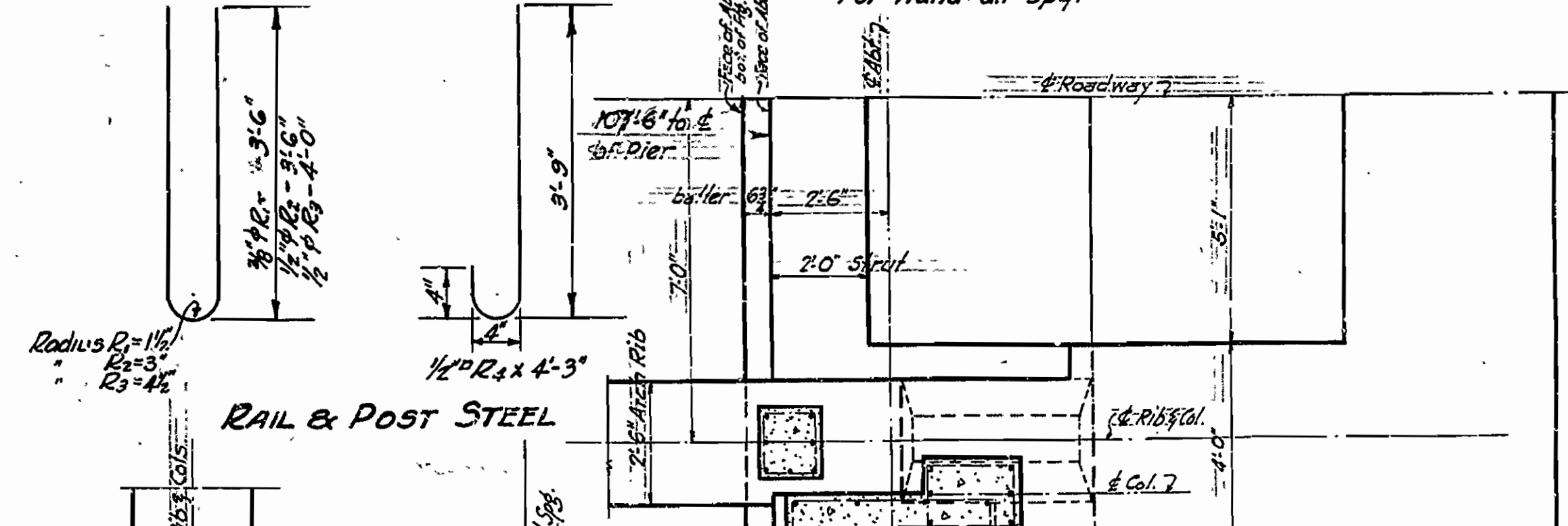
PART END VIEW END BENT

NOTE: REINF. & DIMENSIONS NOT SHOWN ON THIS VIEW ARE SAME AS INT. BENT

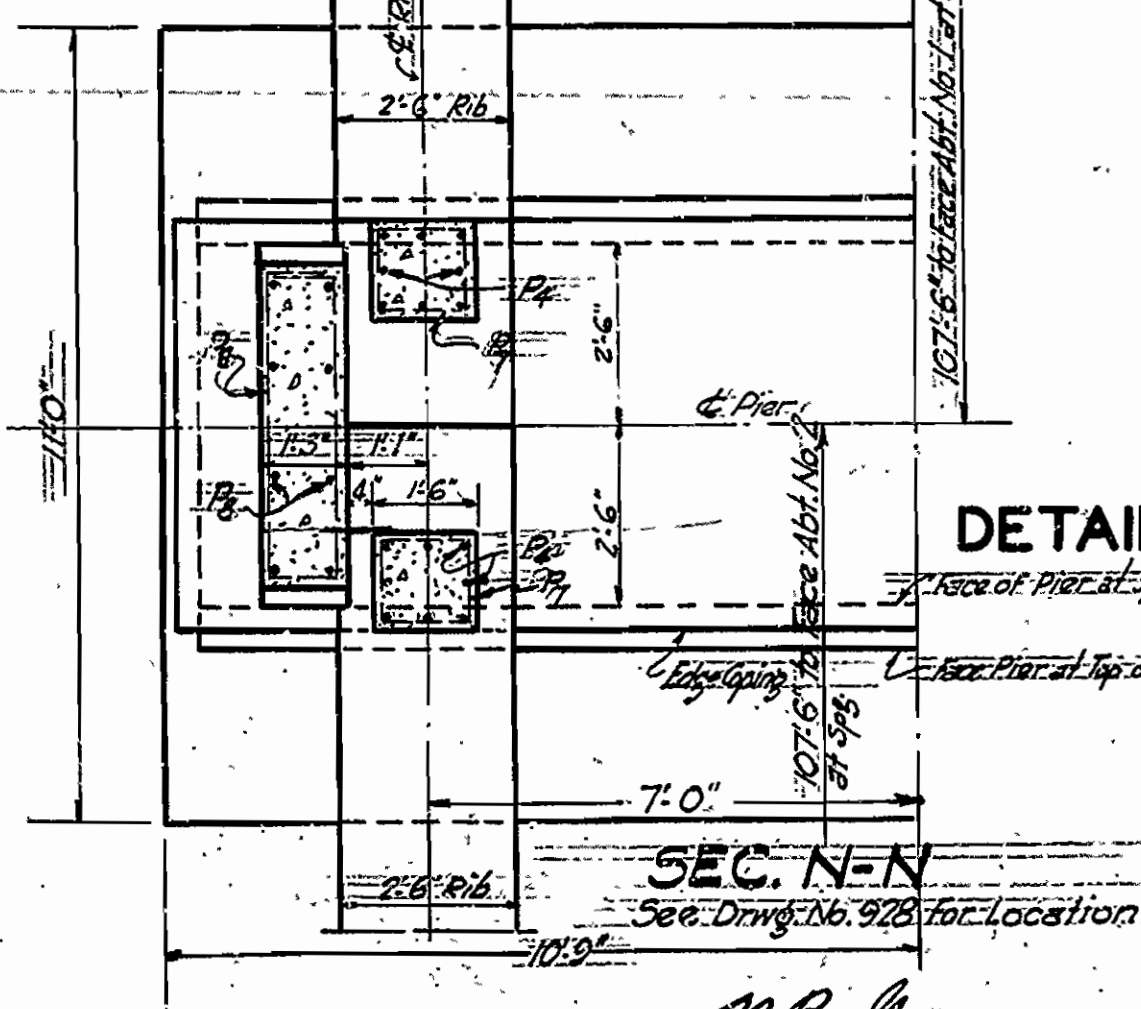


DETAILS OF POSTS AT ABUTS. & PIERS.

HANDRAIL DETAILS Scale 3/4"=1'-0"



RAIL & POST STEEL



SEC. N-N

SEC. M-M

DETAILS OF EAST APPROACH SUBSTRUCTURE AND HANDRAIL DETAILS BRIDGE OVER SALINE RIVER SALINE COUNTY

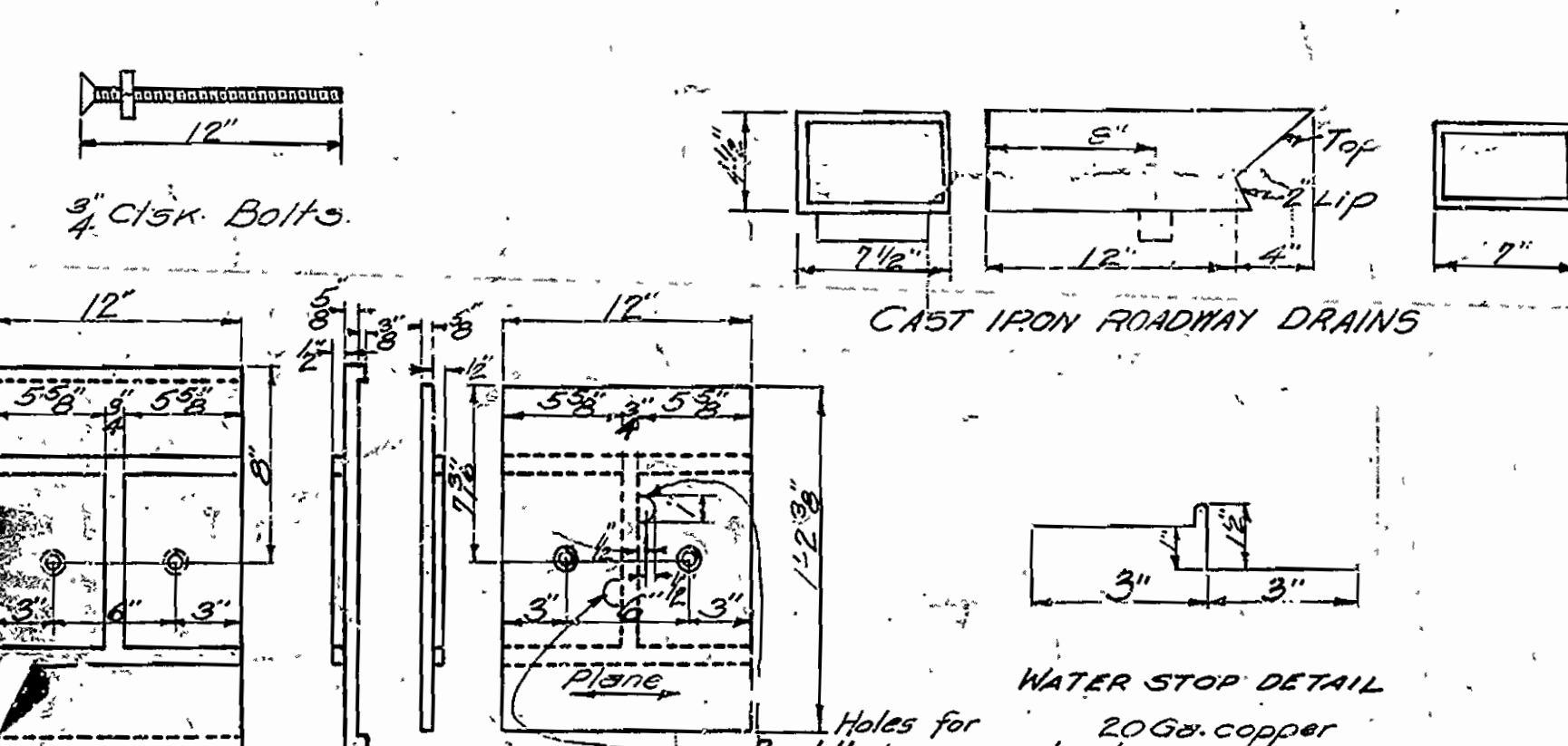
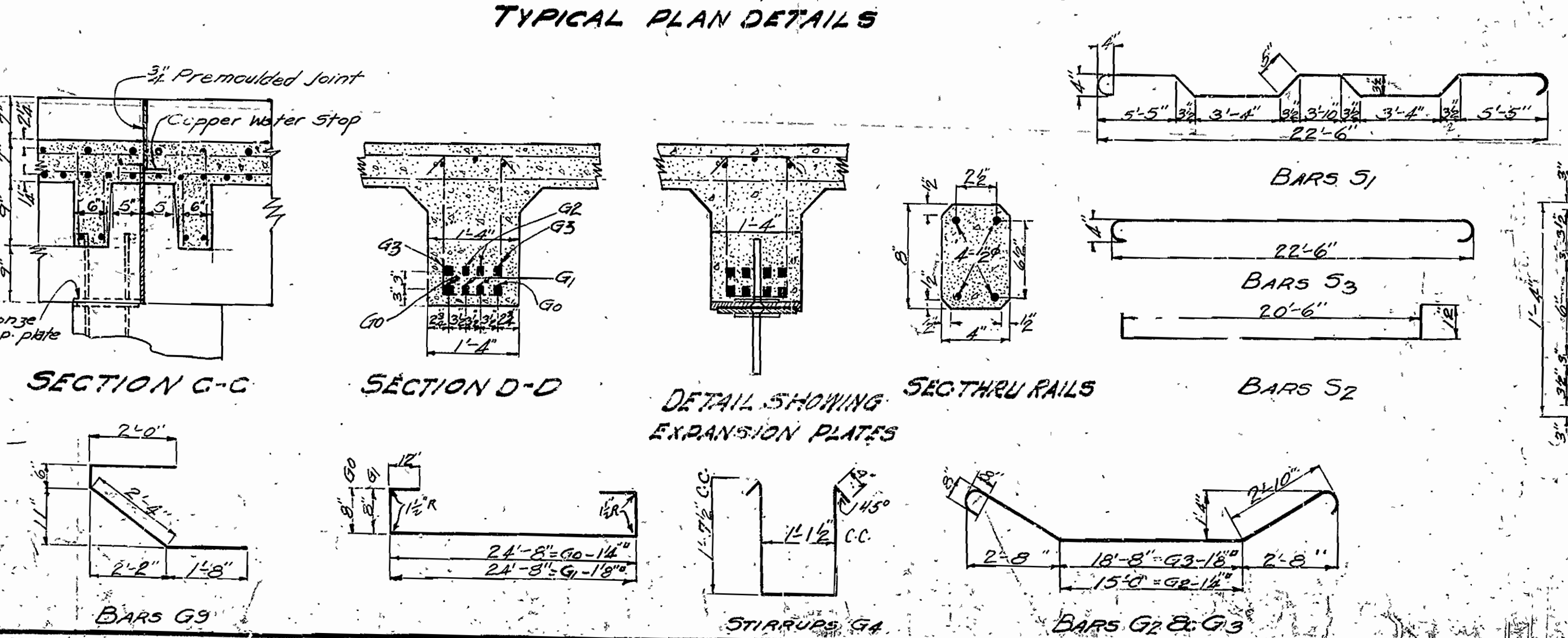
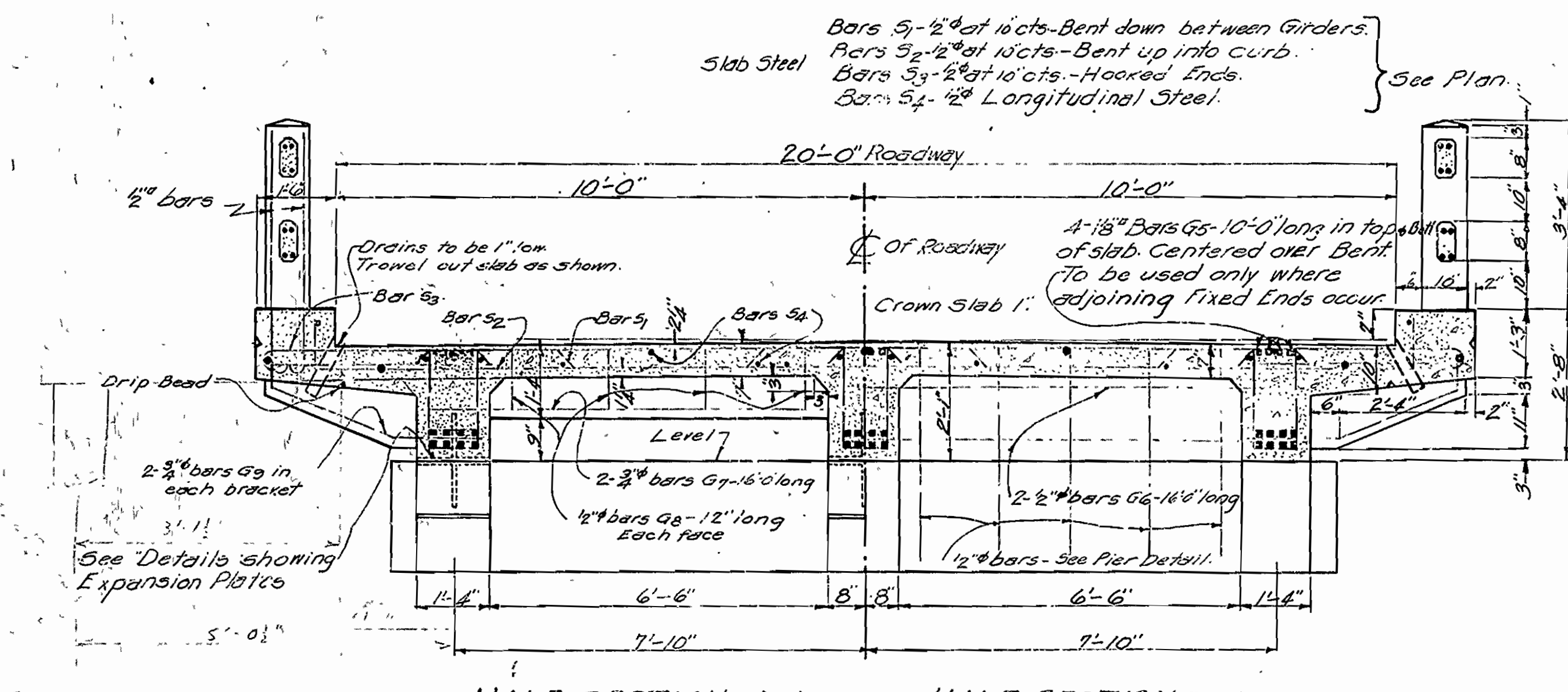
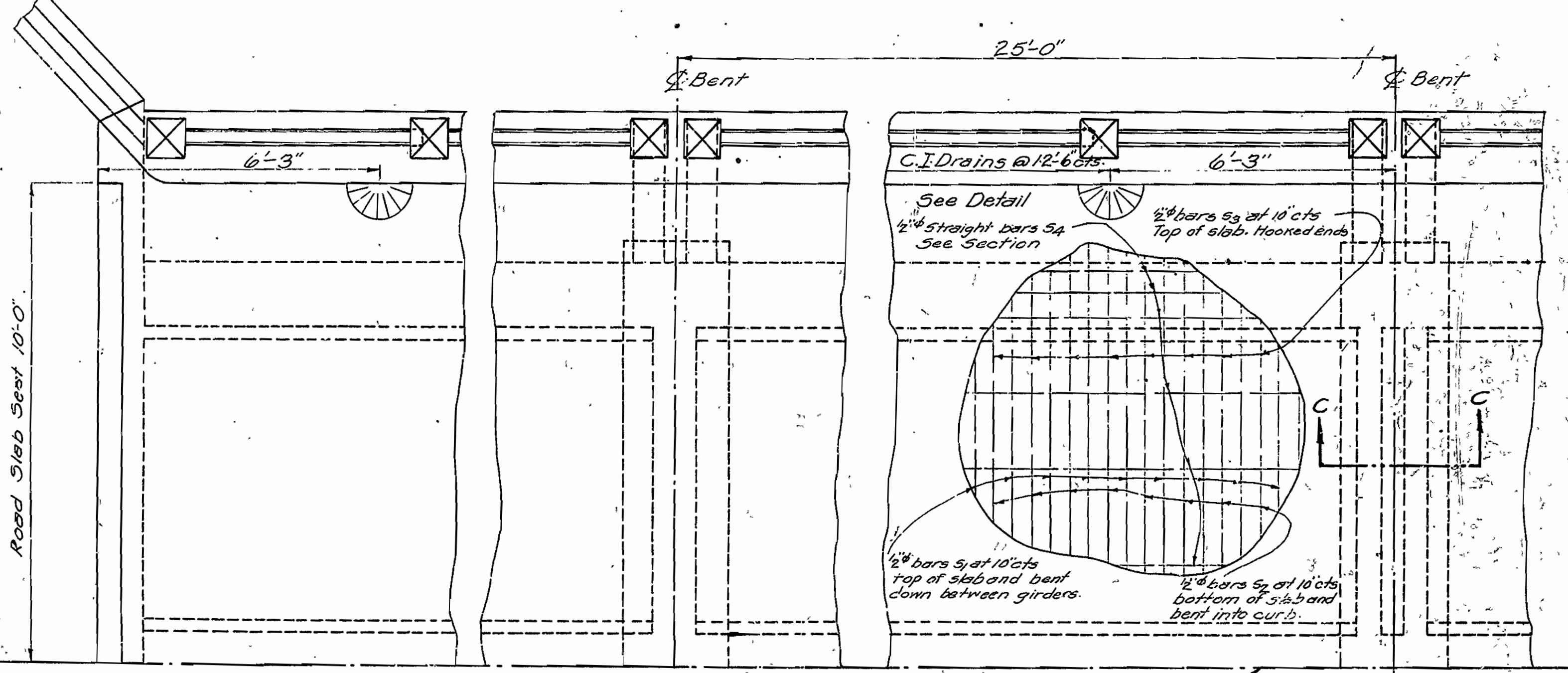
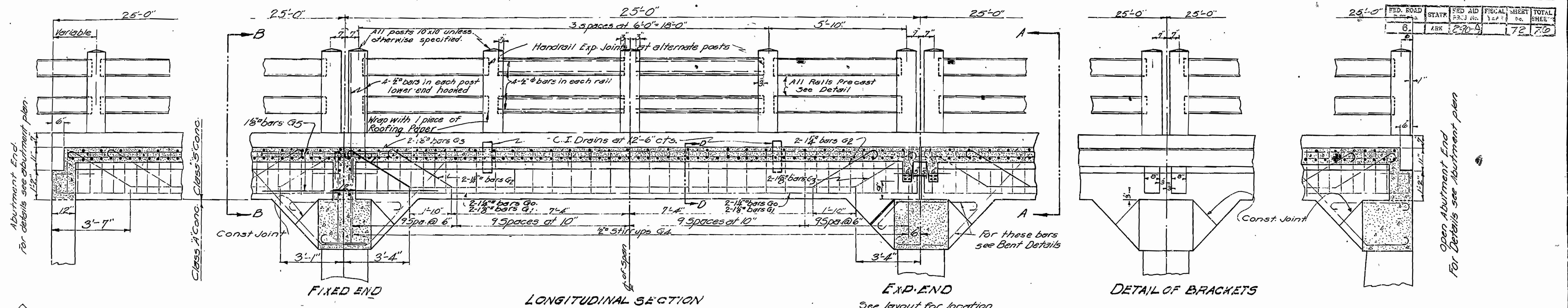
ROUTE 67 SEC. 9
ARKANSAS STATE HIGHWAY DEPARTMENT
 LITTLE ROCK, ARK.

Drawn By: *W.E.* Date: 7-2-28
 Traced By: *W.E.* Date: 7-5-28
 Checked By: *W.E.* Date:
 Scale: 3/8"=1 ft.
BRIDGE NO. 414 DRAWING NO. 929

Revised: Hanch. Steel 4 Secs. M.S.M. 3 N.N. 10-16-28 2nd

W.B. Swann
 BRIDGE ENGINEER

FISCAL YEAR	SHEET NO.	TOTAL SHEETS
1925	72	70



GENERAL NOTES

All exposed corners to have 3/8" chamfer unless noted otherwise.

Precast Concrete Handrails to be 4 1/2" min. maximum over 6 1/2" min.

Reinforcing steel to be Class 5 concrete.

Concrete above top of Column Caps except Handrails to be Class 5 concrete. Below this point Class A concrete.

All concrete to be poured in the dry.

Reinforcing Steel to be deformed bars of Structural or intermediate grade. Shop lists and bending diagrams shall be submitted by the contractor before fabrication is begun. Roadway drains and expansion devices to be sold for at unit price bid for reinforcing steel.

Specifications: Arkansas Standard Road and Bridge Specifications, adopted May 30, 1925 and revised.

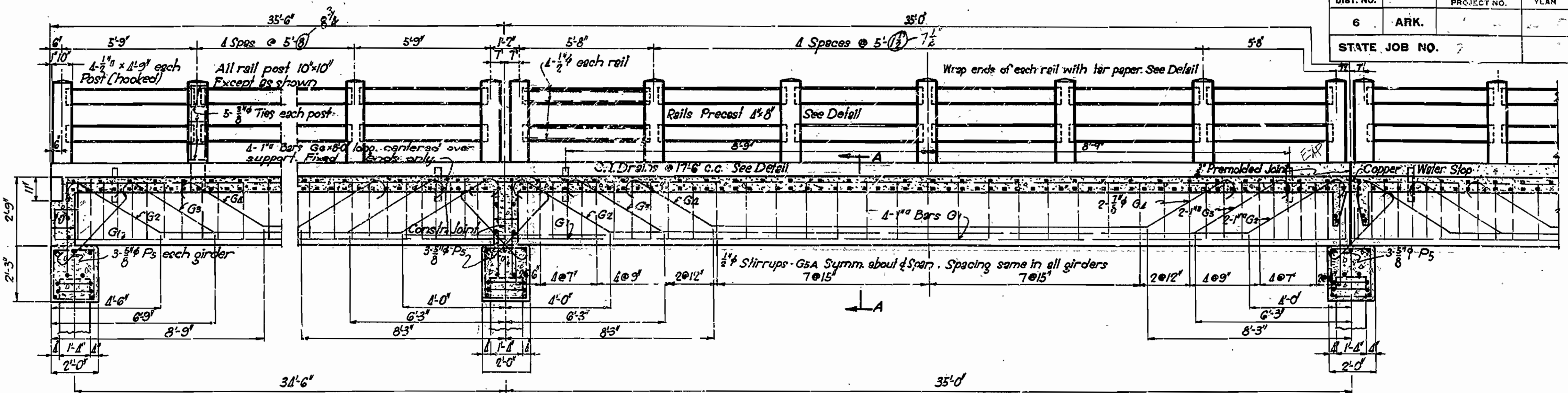
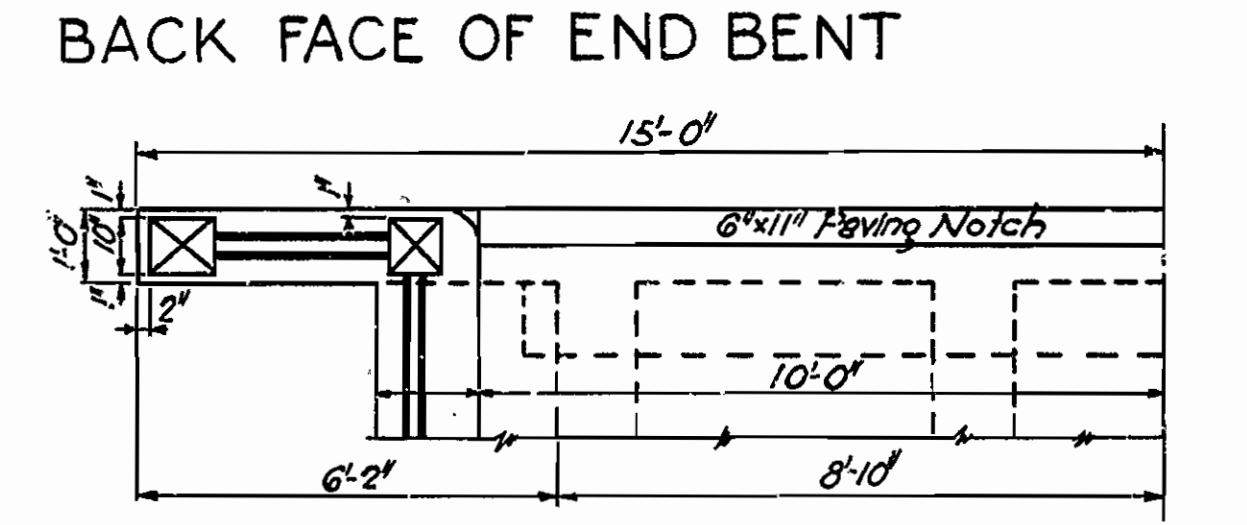
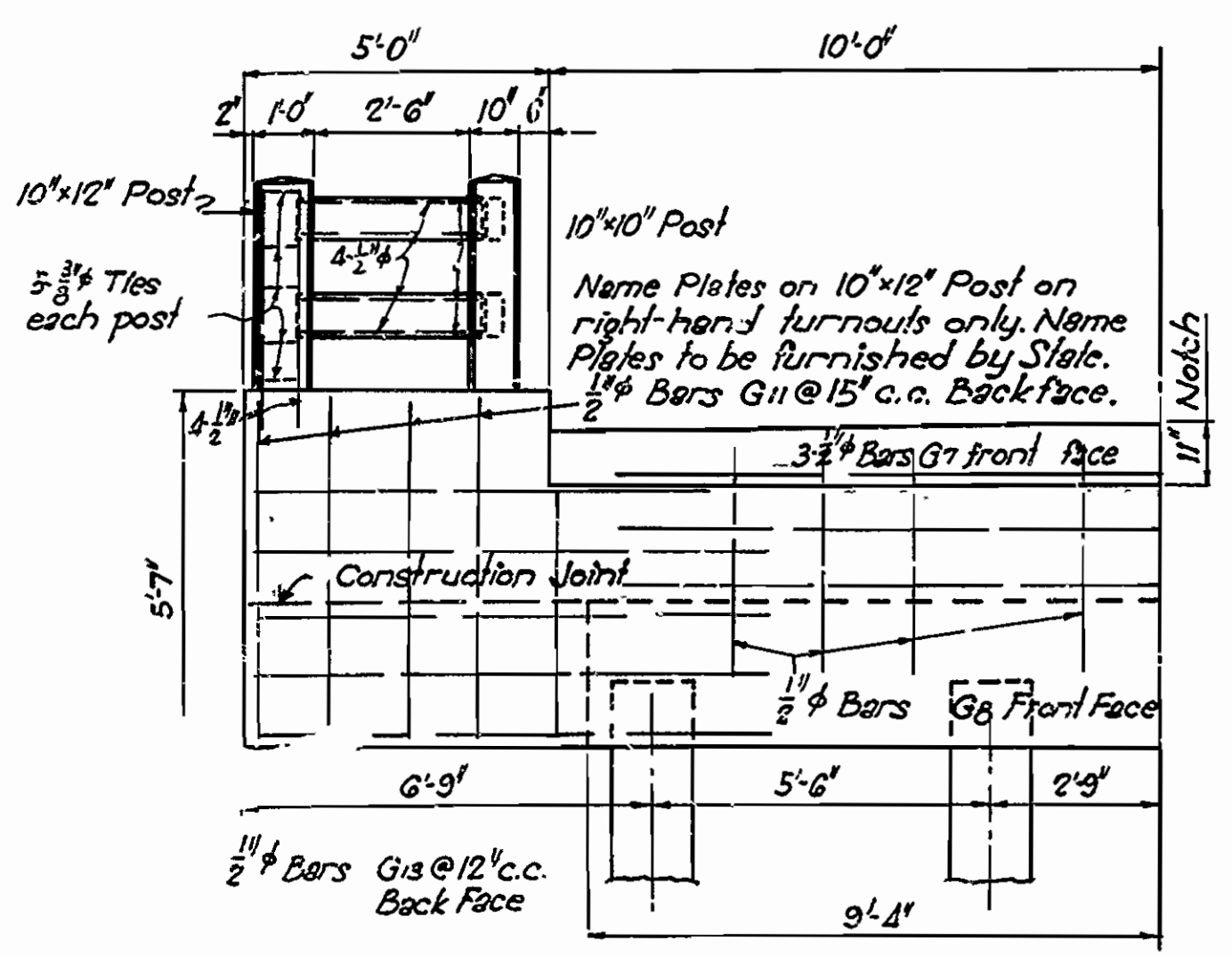
Note: This Drawing included in Job No. 1-1-25 for reference only.

25'-0" R.C. DECK GIRDER
20'-0" ROADWAY

ARKANSAS STATE HIGHWAY DEPARTMENT
LITTLE ROCK, ARK.

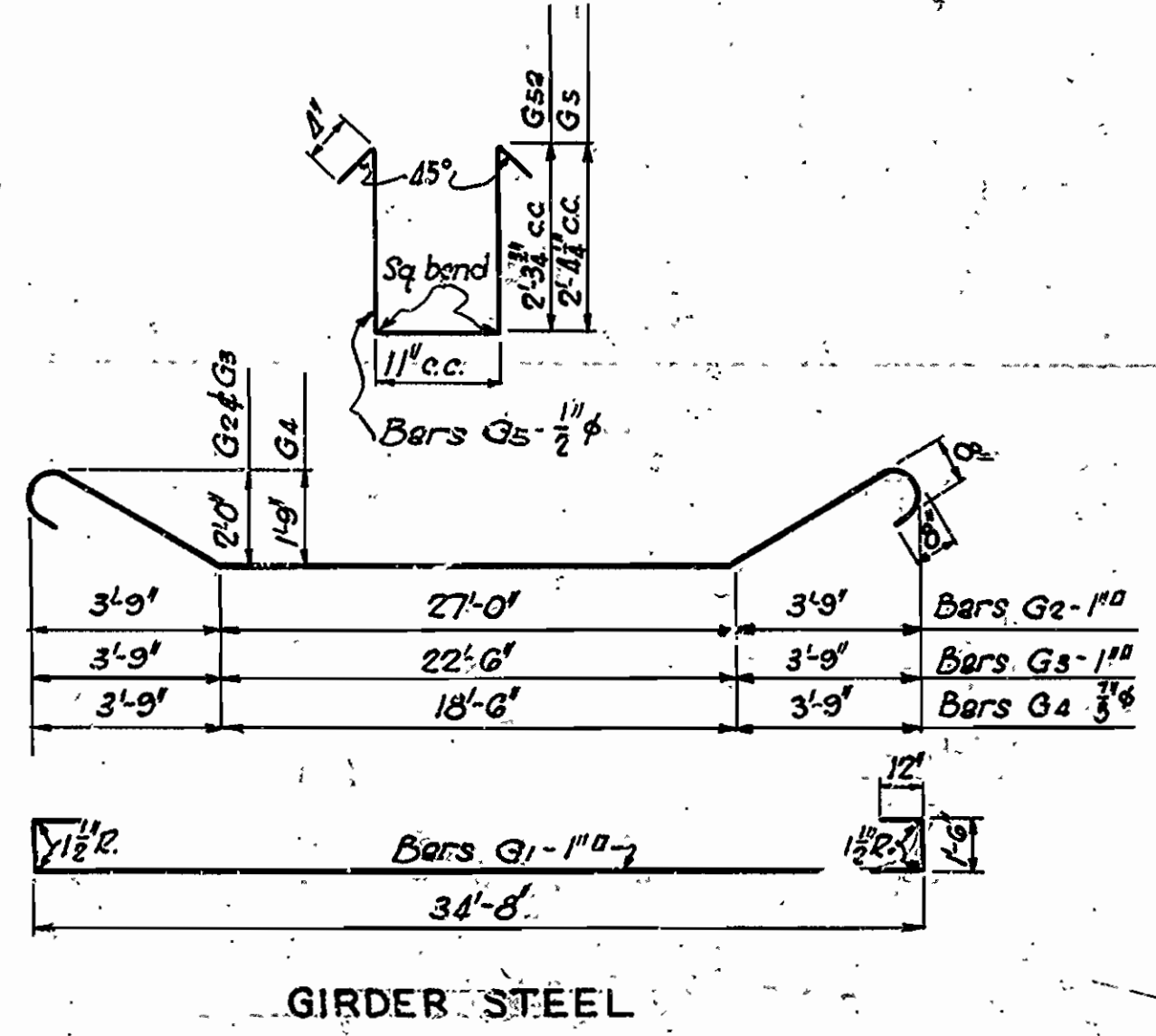
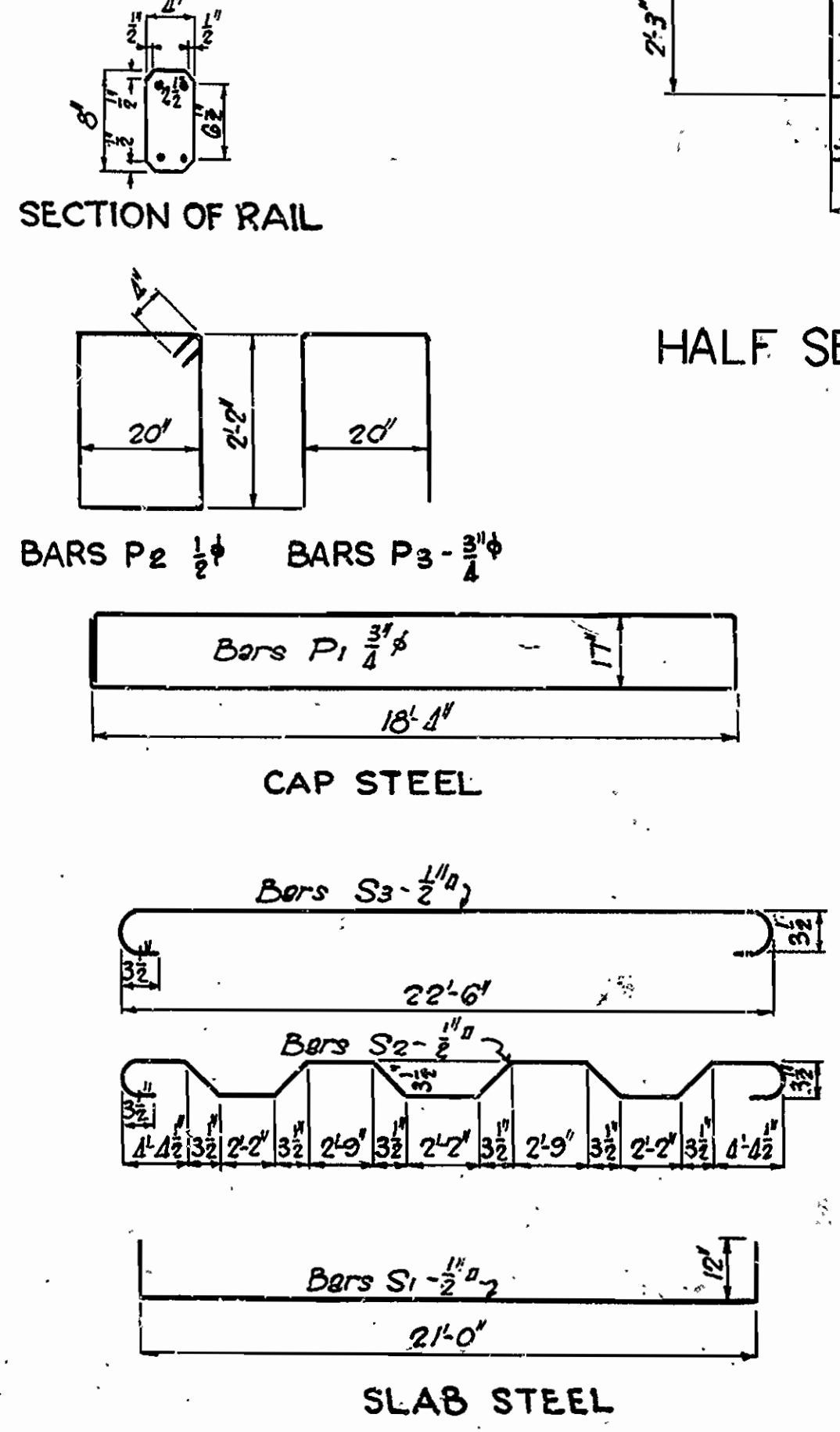
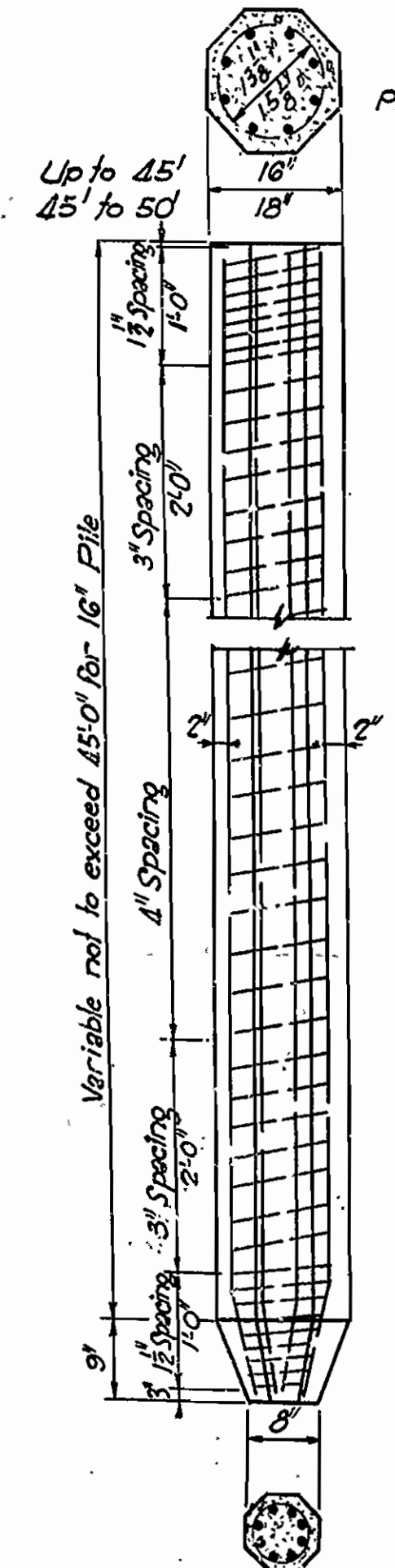
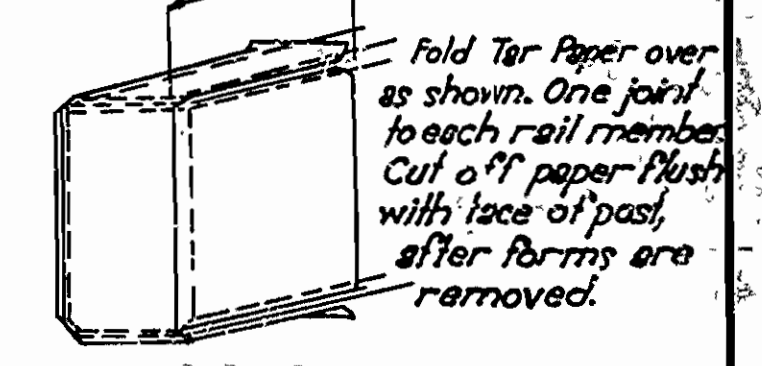
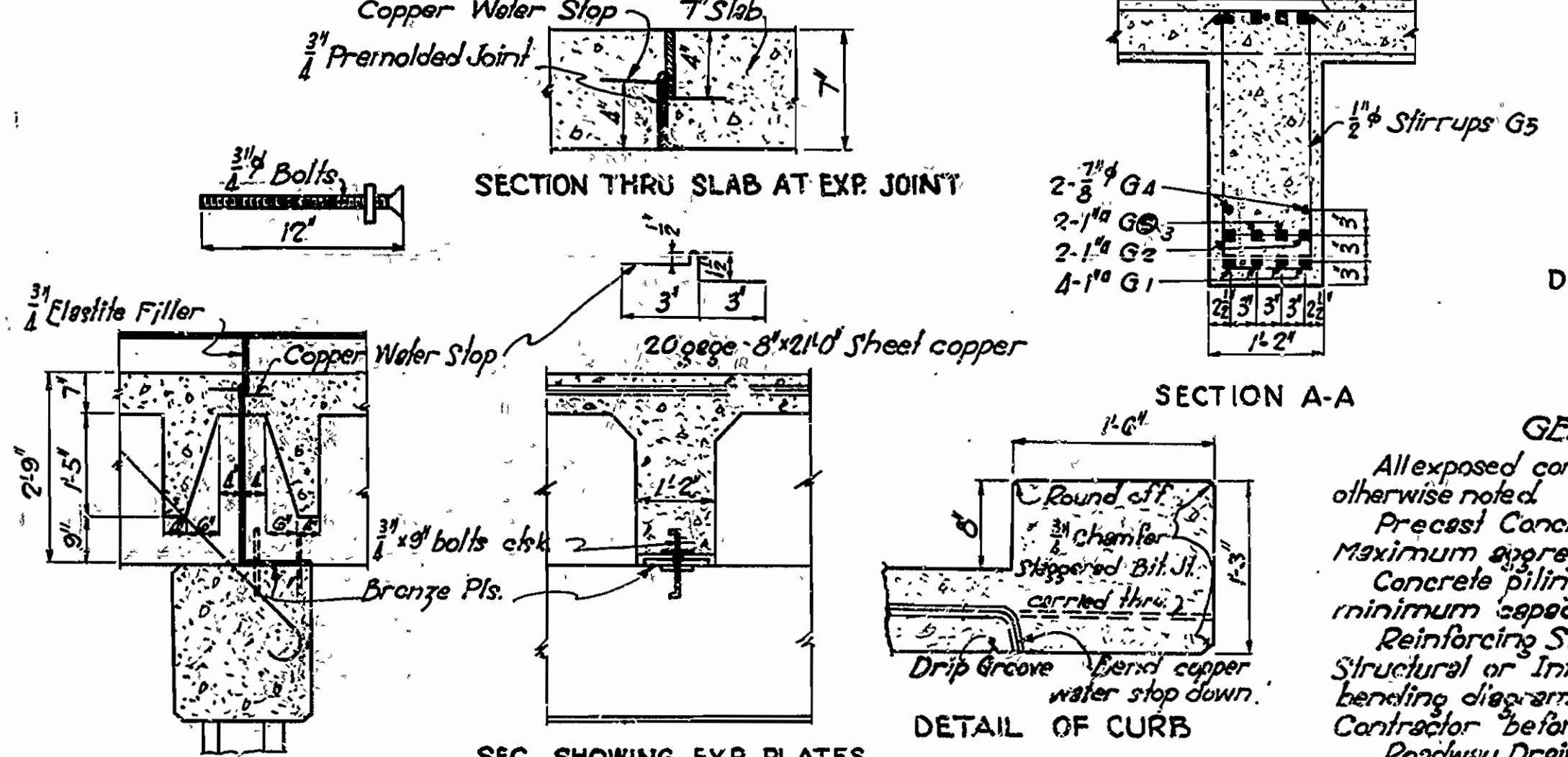
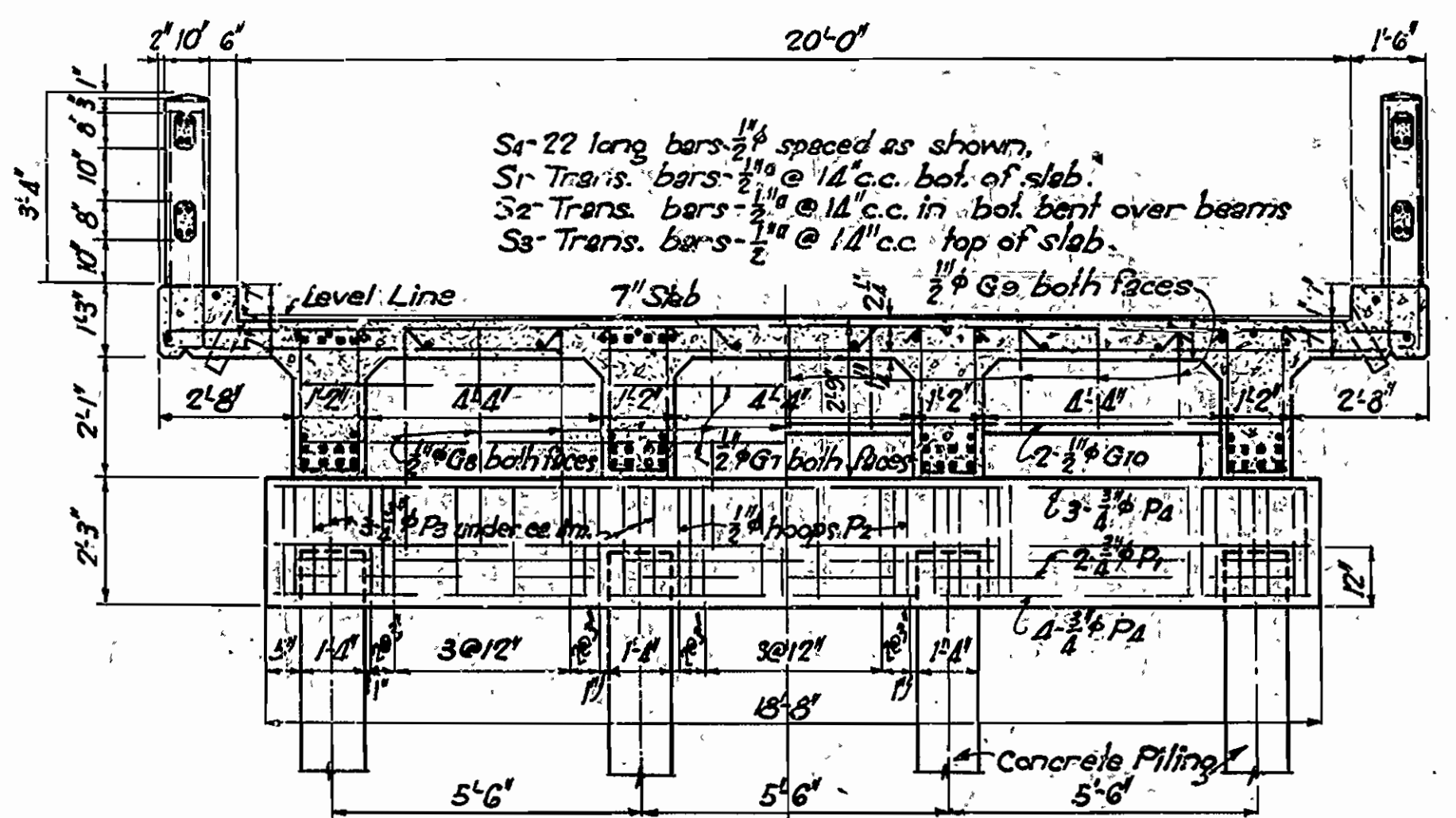
Scale: 3/8" = 1'-0"

DRAWING NO. 100



BACK FACE OF END BENT END BENT INT. BENT (FIXED) INT. BENT (EXPANSION) LONGITUDINAL SECTION

See Layout Sheet for location of exp. joints.
 4-1" G6 x 8' 0" lg. over supports in top and bottom, at fixed Ends only.



GENERAL NOTES

All exposed corners to have 3" chamfer unless otherwise noted.

Precast Concrete Handrails to be 1-1-2 mix. Maximum aggregate 3".

Concrete Piling to be Class 'S', and to have a minimum capacity of 30 tons each.

Reinforcing Steel to be deformed bars of Structural or Intermediate Grade. Shop list and bending diagrams of steel must be submitted by Contractor before fabrication is begun.

Roadway Drains and Expansion Devices to be bid for at the unit price bid for Reinforcing Steel.

All concrete except handrails to be Class 'S'.

All concrete to be poured in the dry.

Payment for reinforcement in concrete Piling shall be included in the price bid for Piling.

Specifications: Arkansas Standard Road and Bridge Specifications adopted May 30th, 1925, and revised.

Revised: 4-G6 Bars added to bottom of Girders. Exp. plate bolts changed. 9/23/29 G.A.
 GENERAL REV. 4-10-30. F.P.B.

DETAILS
 STANDARD 35' R.C. DECK GIRDER
 AND
 CONCRETE PILE BENTS
 20'-0" ROADWAY
 ROUTE SEC.

ARKANSAS STATE HIGHWAY COMMISSION
 LITTLE ROCK, ARK.

Drawn By: N.B. Date: 6-16-28
 Re-Traced By: B.W.C. Date: 11-23-29
 Checked By: Date: _____

Scale: 3/8" = 1' - 0"

BRIDGE ENGINEER
N.B. Hammer
 BRIDGE ENGINEER

BRIDGE NO. _____ DRAWING NO. 1019